

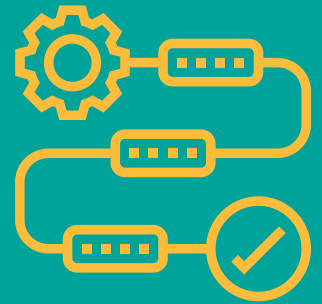


BPM+ Health improves the quality and consistency of healthcare delivery.

The BPM+ Health™ community of practice improves healthcare by applying business process modeling standards to clinical best practices, care pathways, and workflows directly at the point of care. By documenting their care pathways and workflows using open, standards-based notations, practitioners can discover and share care pathways and workflows accurately and consistently. Through our collaboration with professional organizations, academia, clinical societies, and healthcare providers, we develop and pilot standards-driven healthcare process automation techniques.

BPM+ Health's community goals:

- Develop best practices around clinical pathways and guidelines
- Promote adoption of standards to maximize their usefulness
- Cultivate a knowledge ecosystem devoted to improving health
- Improve best-practice precision and compliance for better implementations
- Collaborate with other standards organizations in healthcare



FIELD GUIDE TO SHAREABLE CLINICAL PATHWAYS

The Field Guide leverages standard-based methods from OMG, HL7, and HSPC to represent and share the clinical knowledge.



BPM+ ADOPTION GUIDE & PLAYBOOK

The Playbook provides guidance and tools to assist organizations with the adoption of shareable clinical pathways.



READINESS ASSESSMENT MATURITY MODEL (RAMM)

The RAMM was created to help organizations keep up with healthcare industry best practices.

It still takes up to 17 years for the latest medical knowledge & best practices to be integrated into clinical workflows.

This time lag has devastating consequences for all of healthcare's leading actors (Patient, Provider, Payer) & stands a firm barrier to realizing value-based care outcomes. Become a BPM+ Health member to heal healthcare today & join an active community of practice driving real change.

Why Join a Community of Practice?

- Pool resources with our community of practice and increase your R&D
- Help shape what patients and providers need in accelerating HealthIT
- Obtain visibility into what other companies are working on, what problems and challenges they have solved leveraging BPM+
- Gain early access to test beds, shareable clinical pathways, best practices, and community tooling
- Shape your project plans with insights from fellow members & partners
- Gain market presence as part of the ecosystem
- Collaborative outreach and messaging to amplify our mutual market goals

Membership Dues

Become a member today

www.bpm-plus.org/membership

- US \$500 million - \$21,500
- US \$100-499 million - \$11,000
- US \$10-99 million - \$5,500
- US \$0-9 million - \$3,000
- US \$0-2 million (Small consultancy) - \$1,500
- Government - \$12,850
- Regional Healthcare Government - \$8,000
- Professional healthcare society (more than \$9 million) - \$5,000
- Professional healthcare society (\$0-9 million) - \$3,000
- University - \$550



Founding Members

- American College of Emergency Physicians (ACEP)
- Auxilium Technology Group
- EvidenceCare
- Mayo Clinic
- Perspecta
- Red Hat
- Stevens Institute of Technology
- Trisotech
- University of Utah
- University of Washington
- U.S. Department of Veterans Affairs

Interested in membership?

Contact bd-team@omg.org to get started.

bpm-plus.org

